

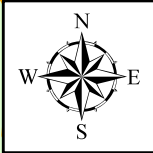
# Eastern Equatoria State Map

IMU OCHA Southern Sudan receives funds from:

**EUROPEAN COMMISSION**



Humanitarian Aid

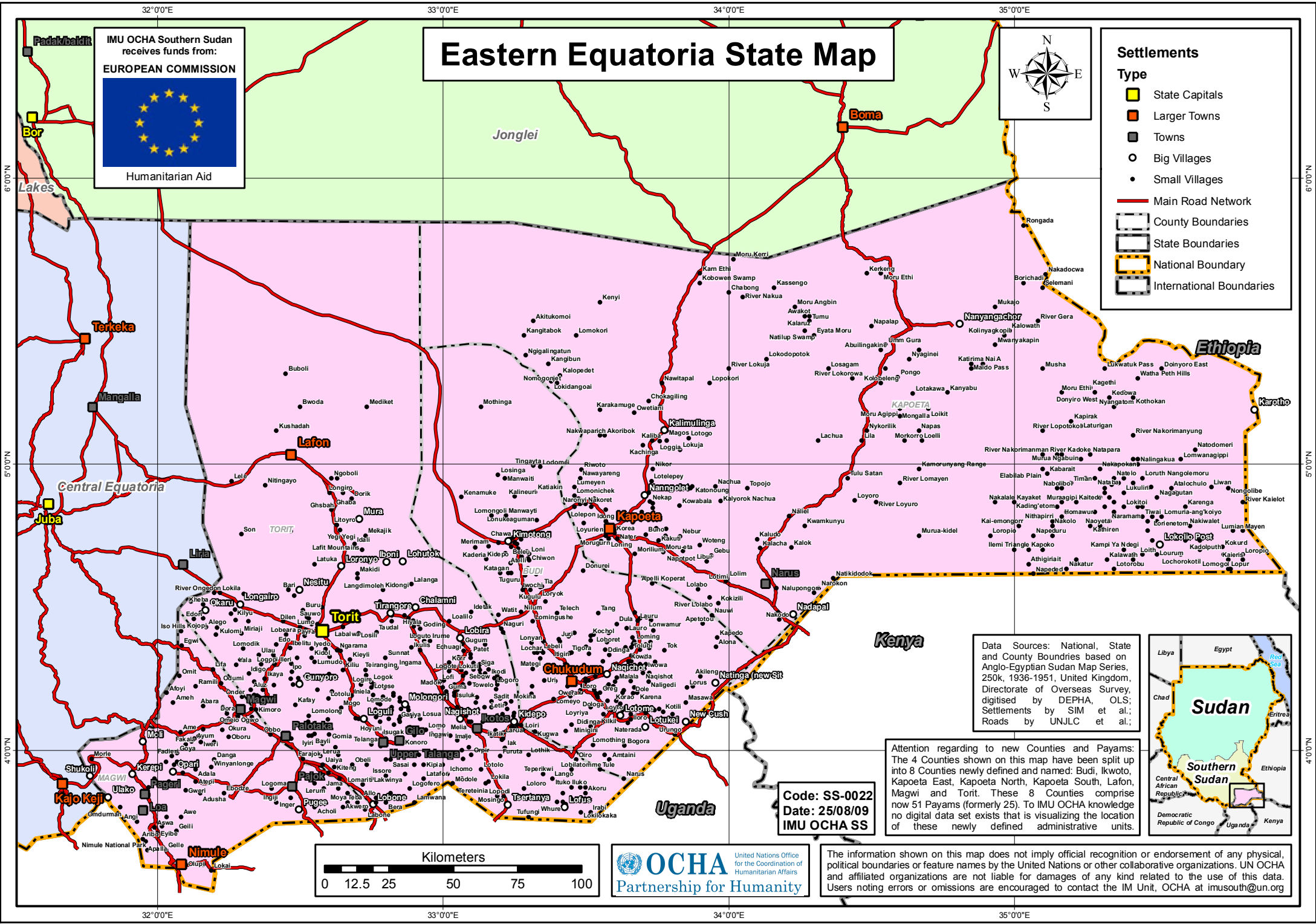


### Settlements

**Type**

- State Capitals
- Larger Towns
- Towns
- Big Villages
- Small Villages

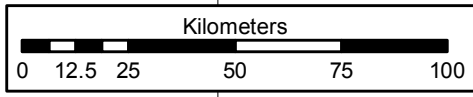
- Main Road Network
- County Boundaries
- State Boundaries
- National Boundary
- International Boundaries



Data Sources: National, State and County Boundaries based on Anglo-Egyptian Sudan Map Series, 250K, 1936-1951, United Kingdom, Directorate of Overseas Survey, digitised by DEPHA, OLS; Settlements by SIM et al.; Roads by UNJLC et al.;

Attention regarding to new Counties and Payams: The 4 Counties shown on this map have been split up into 8 Counties newly defined and named: Budi, Ikwoto, Kapoeta East, Kapoeta North, Kapoeta South, Lafon, Magwi and Torit. These 8 Counties comprise now 51 Payams (formerly 25). To IMU OCHA knowledge no digital data set exists that is visualizing the location of these newly defined administrative units.

Code: SS-0022  
Date: 25/08/09  
IMU OCHA SS



The information shown on this map does not imply official recognition or endorsement of any physical, political boundaries or feature names by the United Nations or other collaborative organizations. UN OCHA and affiliated organizations are not liable for damages of any kind related to the use of this data. Users noting errors or omissions are encouraged to contact the IM Unit, OCHA at imusouth@un.org

